



FM Trends Sustainability Technology Innovation

John Carrillo CFM, IFMA Fellow
Global Chair – IFMA

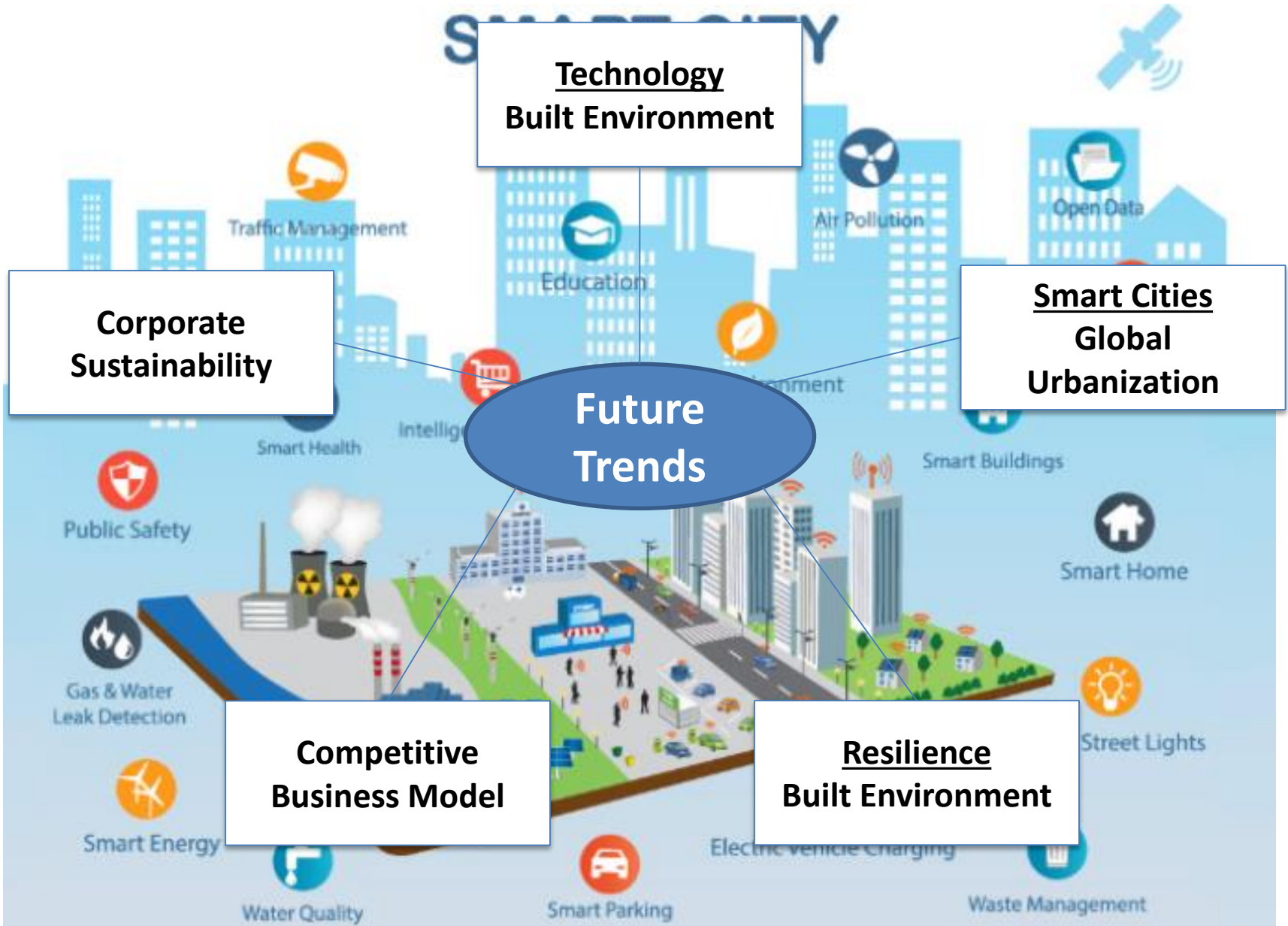


FACILITY FORUM – JFMA
Edogawa ward, Tokyo
Feb. 19 – 20, 2020

- Why Technology, Built Environment, and Climate Change are Connected
- Key Built Environment Trends
 - Competitive Business Model
 - Corporate Sustainability
 - Smart Cities / Global Urbanization
 - Resilience / Built Environment
 - Technology / Built Environment
- Climate Change Collaboration
- Future Technologies







- Competitive market driving technology transformation
- Manage business remotely and in real time – Mobile work force
- Empower customer performance results
- Monetize assets (Excessive commercial office space – U.S.)
- Repurpose space with technology
- Financial targets established to improve operation effectiveness and efficiencies
- Supply chain data analytics performance – third party extension
- Create a wellness happy/productive work environment
- Enhance cyber security technology solutions

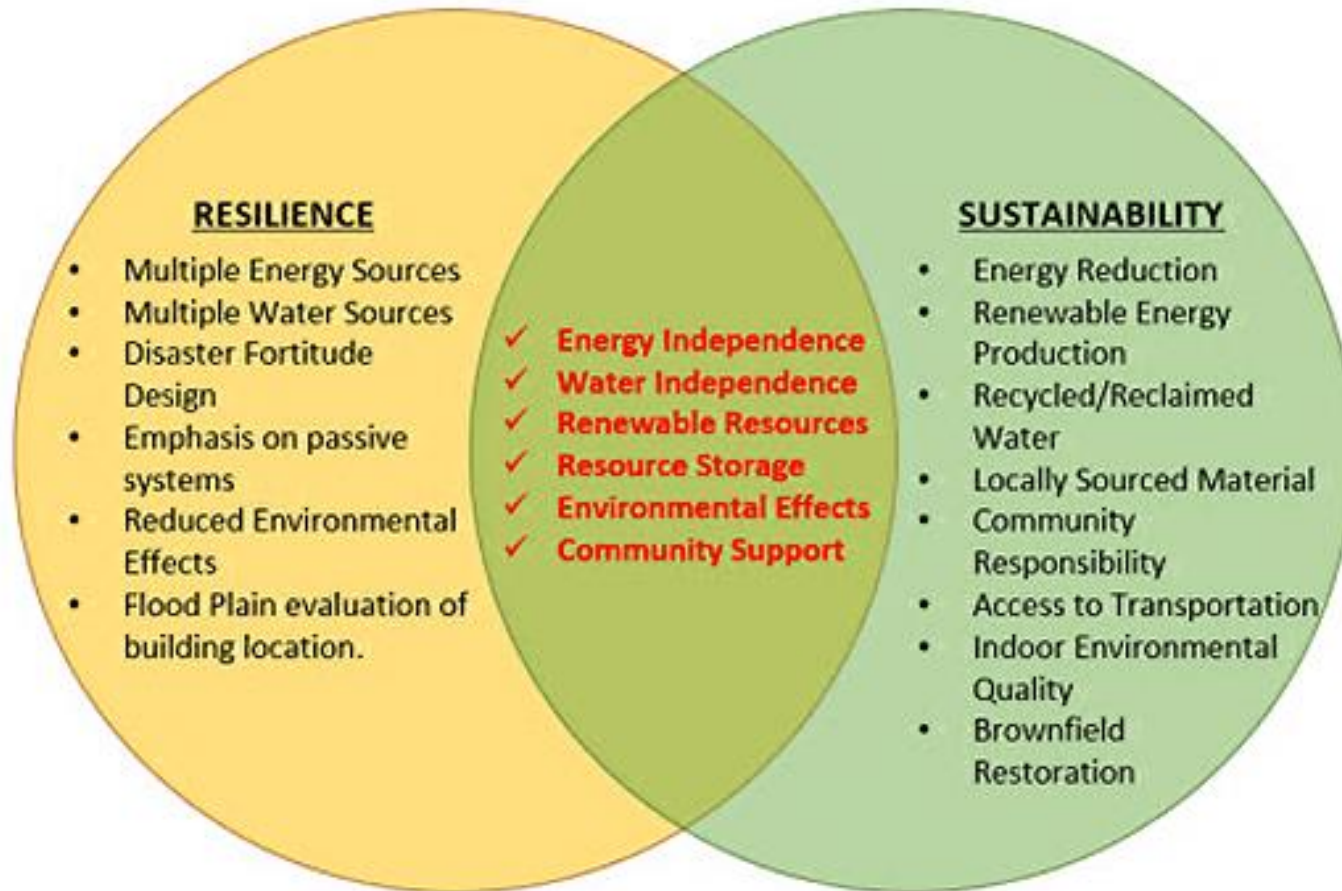


- Reduce carbon footprint
- Alternate renewable energy
- Resources conservation
- Waste minimization
- Move work to people rather than people to work
- Connecting rather than traveling
- Manage business remotely and in real time
- Improve transportation and distribution systems
- Connect people to knowledge economy (E-learning)
- Gender equality unlocks economic growth (U.S.)



- View compliance, environmental requirements, reduce waste emissions
- Focus on green products and reduce carbon foot-print
- Improve transportation and distribution systems
- Green house gas protocol
- Forest stewardship
- Renewable energies
- Rising food demand
- Land shortage housing
- Sinking water resources
- Virtual/connected communities

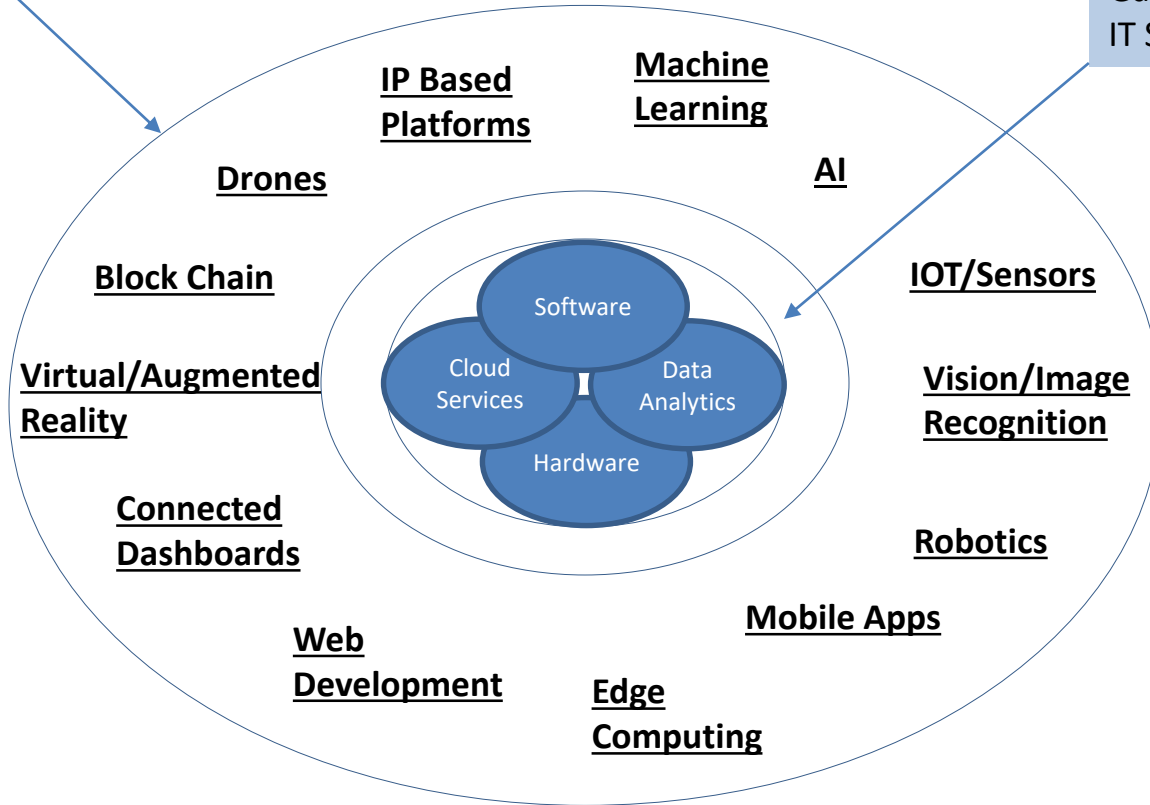




Why Building resilience is the future of sustainable buildings
 Echotape.com

Systems
Program
Applications

Connectivity/Internet
Cyber Security
Gateway/Services
IT Systems



Asset Mgmt. IWMS:
 Space Assessment
 Optimization
 Prop. Tracker
 Lease Mgmt.
 Constr. Mgmt.

Security & Surveillance

Project Mgmt.

Smart Ceiling/Env. Solutions
 AI – A&E/GC
 Data Governance Cloud Framework
 DC Power for Net Zero Bldgs.
 Digital Twin Tech.

Integrate Exist. Bldg. Sys. w/ Smart Enterprise Software:

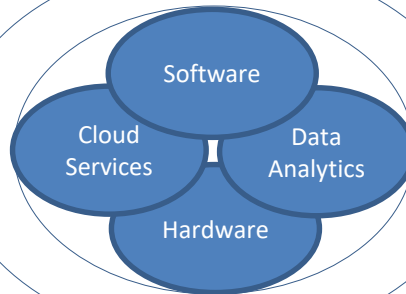
BMS
 BAS
 BIM
 EMS
 CMMS

Drones
Block Chain
Virtual/Augmented Reality
Connected Dashboards

IP Based Platforms

Machine Learning

AI



IOT/Sensors

Vision/Image Recognition

Robotics

Smart Cities Platform:

Electrical Grid
 Water
 Gas
 Public Safety
 Traffic Control
 Environmental
 Air Pollution
 Waste Mgmt.
 Car Charge
 Parking
 Fleet Mgmt.
 Restroom
 Carbon Footprint
 Transportation

Smart Bldg. Platform:
 Corrective/Predictive Maint.
 Extend Equip. Life
 Live Temp Adjustment
 Prescribed Equip. Replacement

Web Development

Edge Computing

Mobile Apps

Supply Chain Contracts – Data Analytics

Corporate Built Environment Sustainability Efforts

- Green buildings / materials
- Zero net buildings targets
- Retrofit existing buildings
- Water usage conservation
- Building performance disclosures

TECHNOLOGY

Human Impact Ecological Elements

- Pollution
- Air
- Water
- Heat
- Noise
- Waste
- Agriculture

.....
AI: Climate models

Blockchain: Renewable equip.

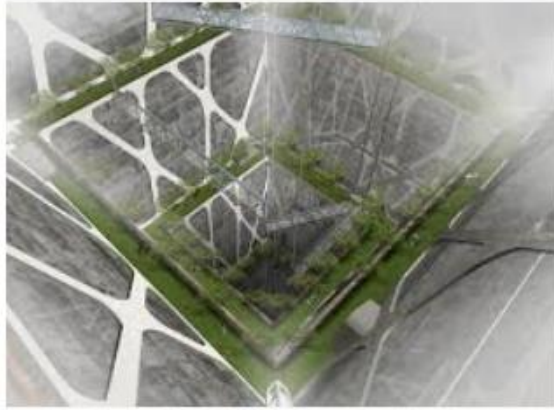
5G: Electric / driverless vehicles

IOT/Drones: Net zero carbon bldgs., traffic

TECHNOLOGY

Global Urbanization / Smart Cities

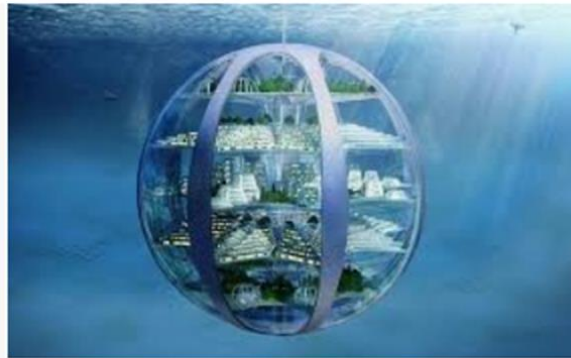
- High traffic
- Urban warming
- Waste recycling
- Energy usage
- Air pollution
- Lack of bio-diversity
- Sinking water resources
- Rising populations / food demand
- Land shortage housing
- Weak social cohesion



Earth Scrapers, Inverted Skyscrapers ...
futureworkplace.uk



Too Two Late Bloomers: One Hundred ...
twolatebloomers.blogspot.com

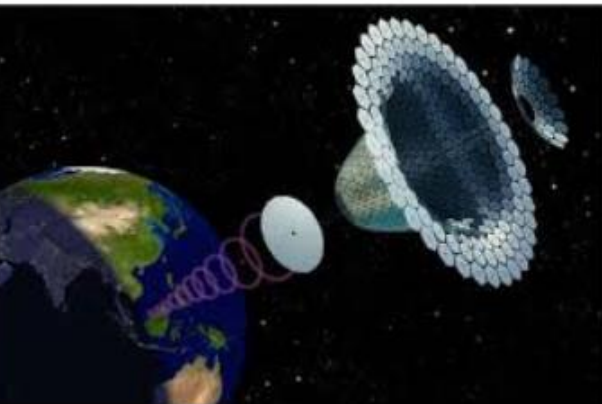


Humans will live underwater in 100 ...
telegraph.co.uk



690 x 400

Technology Could Be Nanomaterials
strategy-business.com



5 Exotic Alternative Energy Proposals ...
listosaur.com